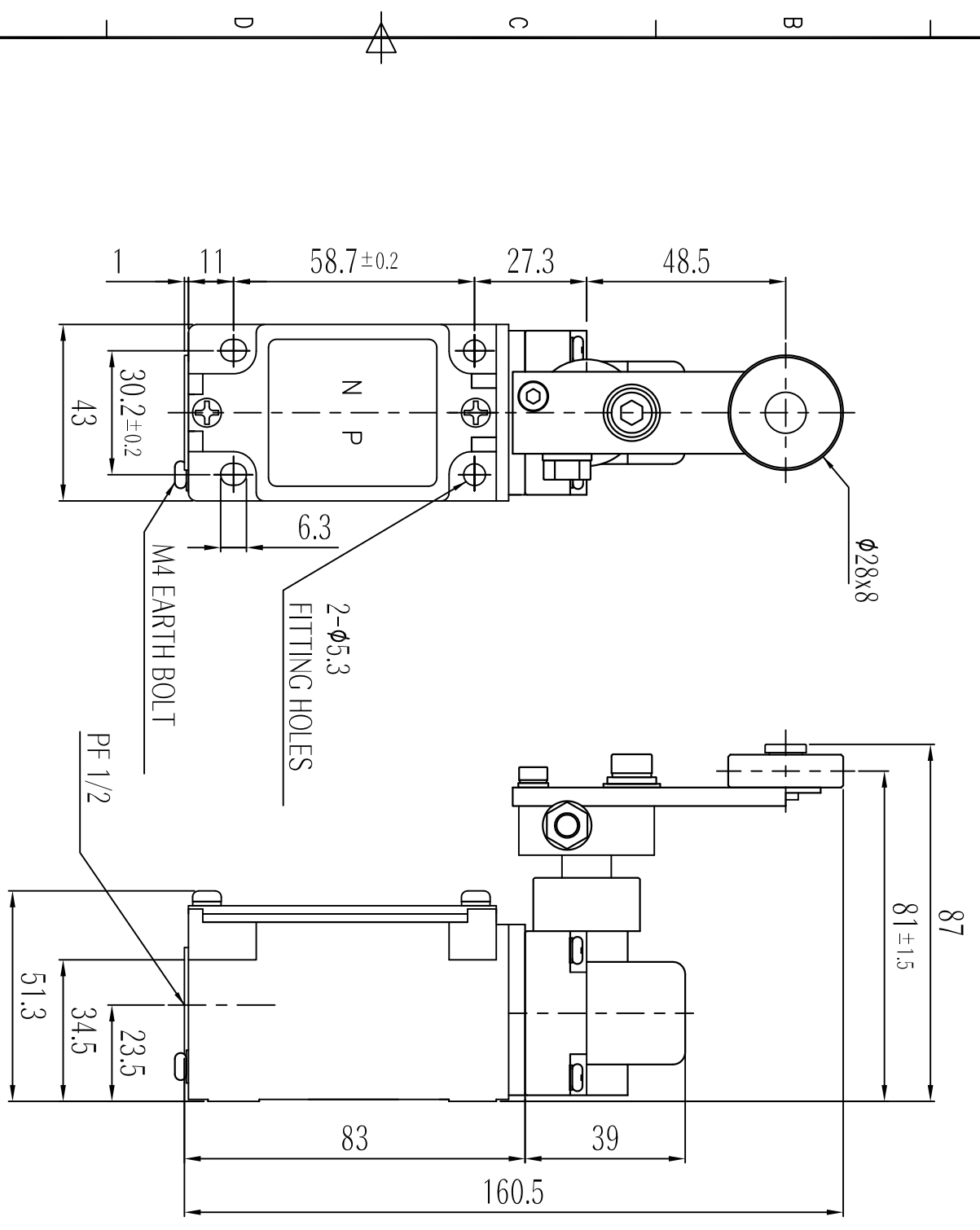


MARK	DATE	REVISION	REVISER	APP. BY
Δ				
Δ				
Δ				

MODEL No.	SW2TS-RL
MATERIAL	HEAD & BODY - DIE CAST BRASS BOLT, NUT, ROLLER & ETC. - SUS304
CONACT	2CKT-DB, 1A1B, 250VAC 6A
PROTECTION GRADE	WATER & DUST PROOF - IP67
CABLE ENTRY	PF 1/2
COLOUR	MAKER STANDARD
INSULATION RESISTANCE	100MΩ MIN. at 500V DC

■ Operating Characteristics

OF max. g	1,380
RF min. g	260
PT	15° ± 5°
MD max.	5°
TT min	60°



ISO2768-1 : CLASS OF TOLERANCE		SURFACE FINISH		TITLE / NAME		MAT'L		QT'Y		REFERENCE	
FOR LINEAR DIMENSIONS	f	g	v	DRG BY	CHKD BY	CHKD BY	APRV BY	VIEW	DATE		
0.5-3	±0.05	±0.1	±0.2	U/H LEE	U/H LEE	U/H LEE		3	2012.01.27		
3-6	±0.1	±0.2	±0.5	OUT-LINE DRAWING (SW2TS-RL)		MODEL					
6-30	±0.15	±0.3	±1.5			SW2TS-RL-OUT					
30-120	±0.2	±0.5	±2.5			SCALE					
120-400	±0.3	±0.8	±4			1/1					
400-1000	±0.5	±1.2	±8			SIZE					
0-10	±1°	±1°30'	±3°			A3					
10-50	±0°30'	±1°	±2°			REV					
50-120	±0°20'	±0°30'	±1°			00					
120-400	±0°10'	±0°13'	±0°30'			SHEET					
						1/-					

1 2 3 4 5 6 7 8

A B C D E F

1 2 3 4 5 6 7

A B C D E F

SW2TS-RL-OUT

SCALE 1/1 SIZE A3 REV 00 SHEET 1/-

A3(420X297)