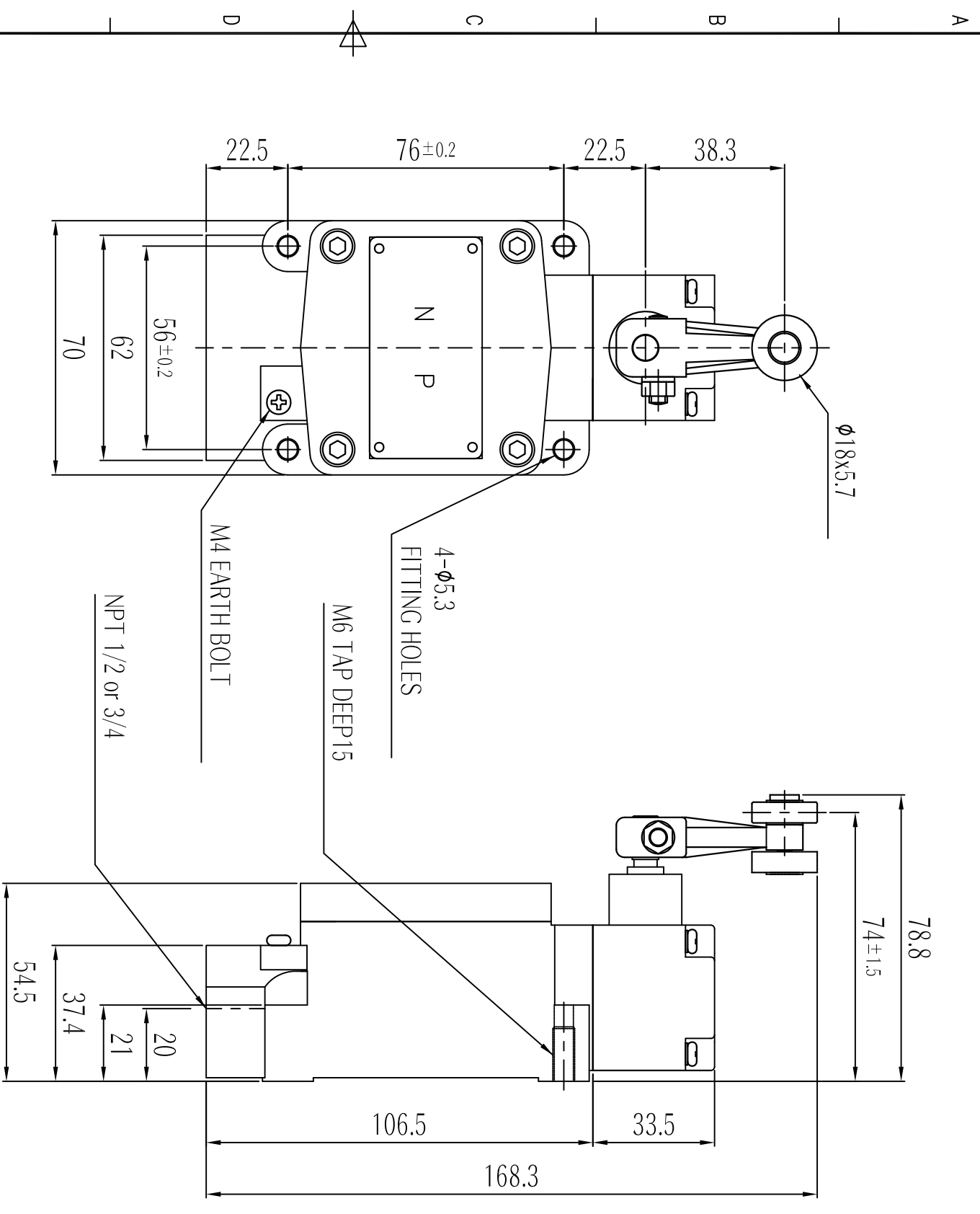


MARK	DATE	REVISION	REVISER	APP. BY
Δ				
Δ				
Δ				

MODEL No.	SLP5130-RL
MATERIAL	HEAD & BODY - DIE CAST AL BOLT, NUT & ETC. - SUS304, ROLLER - POM
CONACT	2CKT-DB, 1A1B, 250VAC 6A
PROTECTION GRADE	EXPLOSION PROOF - Exd II c T6 WATER & DUST PROOF - IP67
CABLE ENTRY	STANDARD - NPT 1/2 OPTION - NPT 3/4
COLIOR	MAKER STANDARD
INSULATION RESISTANCE	100MΩ MIN. at 500V DC

■ Operating Characteristics

OF max. g	1,300
RF min. g	210
PT	15° ± 5°
MD max.	5°
TT min	70°



ISO2768-1 : CLASS OF TOLERANCE				SURFACE FINISH		
FOR LINEAR DIMENSIONS	f	M	H	g	v	RA
0.5-3	±0.05	±0.1	±0.2	±0.3	—	—
3-6	±0.1	±0.2	±0.3	±0.5	—	—
6-30	±0.15	±0.3	±0.5	±1	—	—
30-120	±0.2	±0.4	±0.7	±1.5	—	—
120-400	±0.3	±0.6	±1.2	±2.5	—	—
400-1000	±0.5	±1.0	±2	±4	—	—
0-10	±1°	±1°	±1°	±3°	—	—
10-50	±0° 30'	±1°	±1°	±2°	—	—
50-120	±0° 20'	±0° 30'	±0° 30'	±1°	—	—
120-400	±0° 10'	±0° 10'	±0° 13'	±0° 30'	—	—

NO.	DESIGN BY	CHKD BY	TITLE / NAME	MAT'L	QTY	REFERENCE
1	U.H LEE	U.H LEE	OUT-LINE DRAWING (SLP5130-RL)		3	DATE 2012.01.27

SCALE	SIZE	REV	SHEET
1/1	A3	00	1/-

1 2 3 4 5 6 7 8

A B C D E F

1 2 3 4 5 6 7

A B C D E F

SLP5130-RL-OUT

A3(420X297)