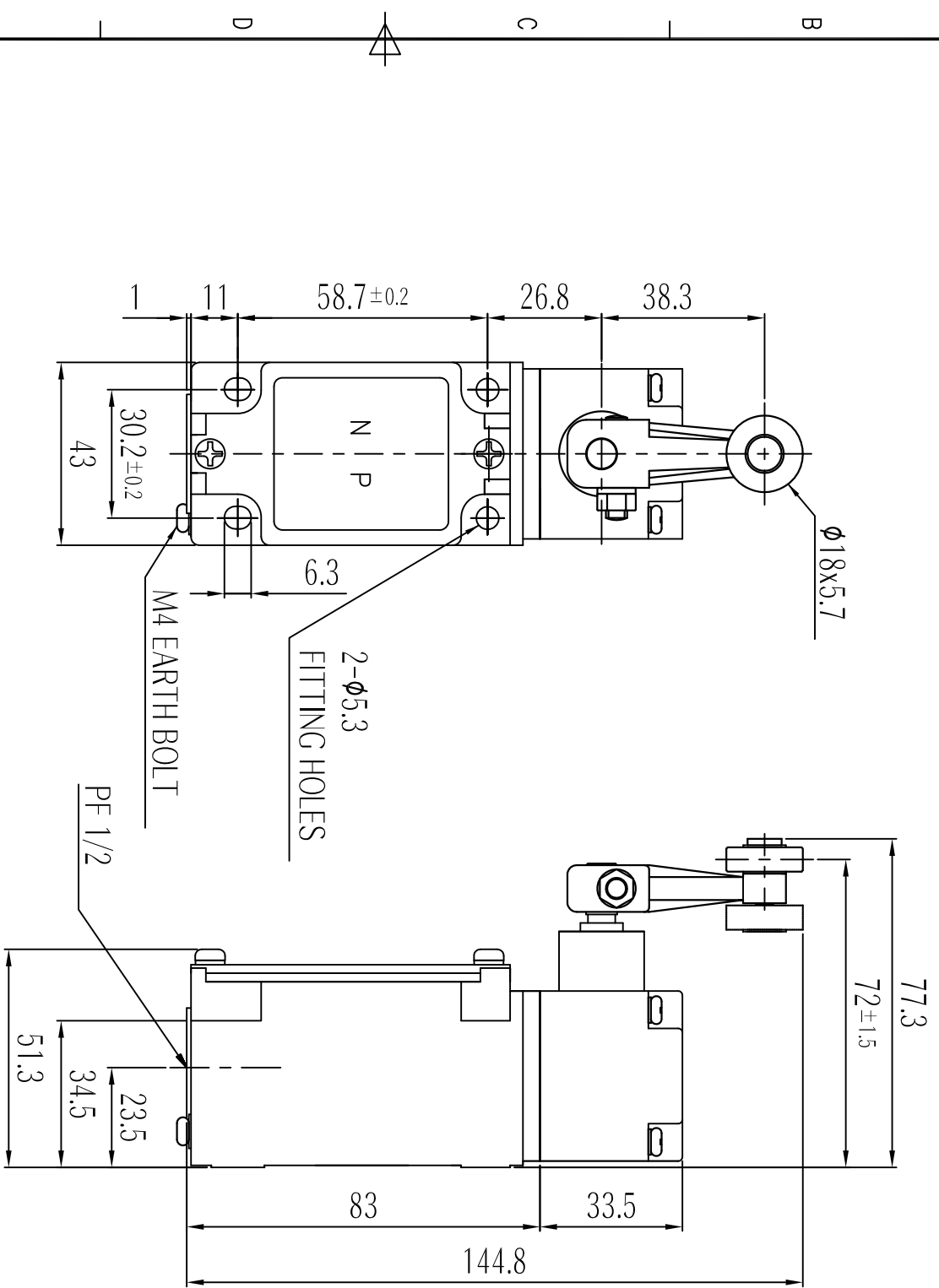


MARK	DATE	REVISION	REVISER	APP. BY
Δ				
Δ				
Δ				

MODEL NO.	SLP2130-RL
MATERIAL	HEAD & BODY - DIE CAST AL BOLT, NUT & ETC. - SUS304, ROLLER - POM
CONACT	2CKT-DB, 1A1B, 250VAC 6A
PROTECTION GRADE	WATER & DUST PROOF - IP67
CABLE ENTRY	PF 1/2
COILOR	MAKER STANDARD
INSULATION RESISTANCE	100MΩ MIN. at 500V DC

■ Operating Characteristics

OF max.g	1,300
RF min.g	210
PT	15° ± 5°
MD max.	5°
TT min	70°



ISO2768-1 : CLASS OF TOLERANCE		SURFACE FINISH	
FOR LINEAR DIMENSIONS	f	g	v
0.5-3	±0.05	±0.1	—
3-6	±0.1	±0.2	±0.5
6-30	±0.1	±0.2	±1
30-120	±0.15	±0.3	±1.5
120-400	±0.2	±0.5	±2.5
400-1000	±0.3	±0.8	±4
FOR ANGULAR DIMENSIONS	+	±1' 30"	±3°
0-50	±0' 30"	±1'	±2°
50-120	±0' 20"	±0' 30"	±1°
120-400	±0' 10"	±0' 13"	±0' 30"

DRG. NO.	SLP2130-RL-OUT
SCALE	1/1
SIZE	A3
REV	00
SHEET	1/-

1 2 3 4 5 6 7 8

A B C D E F

1 2 3 4 5 6 7

A B C D E F

A3(420X297)