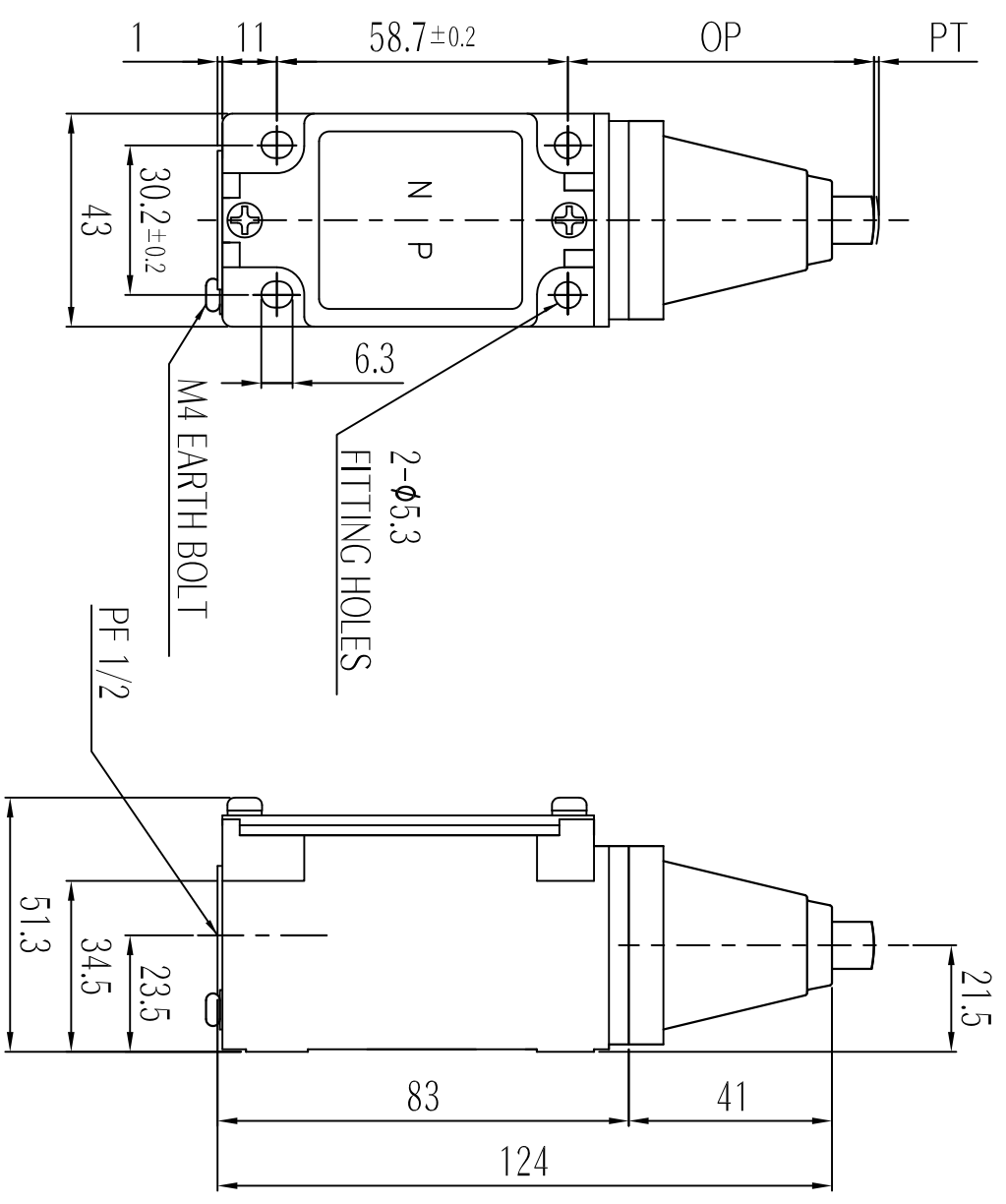


MARK	DATE	REVISION	REVISER	APP. BY
Δ				
Δ				
Δ				

MODEL No.	SLP2130-P
MATERIAL	HEAD & BODY - DIE CAST AL BOLT, NUT & ETC. - SUS304, ROLLER - POM
CONACT	2CKT-DB, 1A1B, 250VAC 6A
PROTECTION GRADE	WATER & DUST PROOF - IP67
CABLE ENTRY	PF 1/2
COLOUR	MAKER STANDARD
INSULATION RESISTANCE	100MΩ MIN. at 500V DC

■ Operating Characteristics

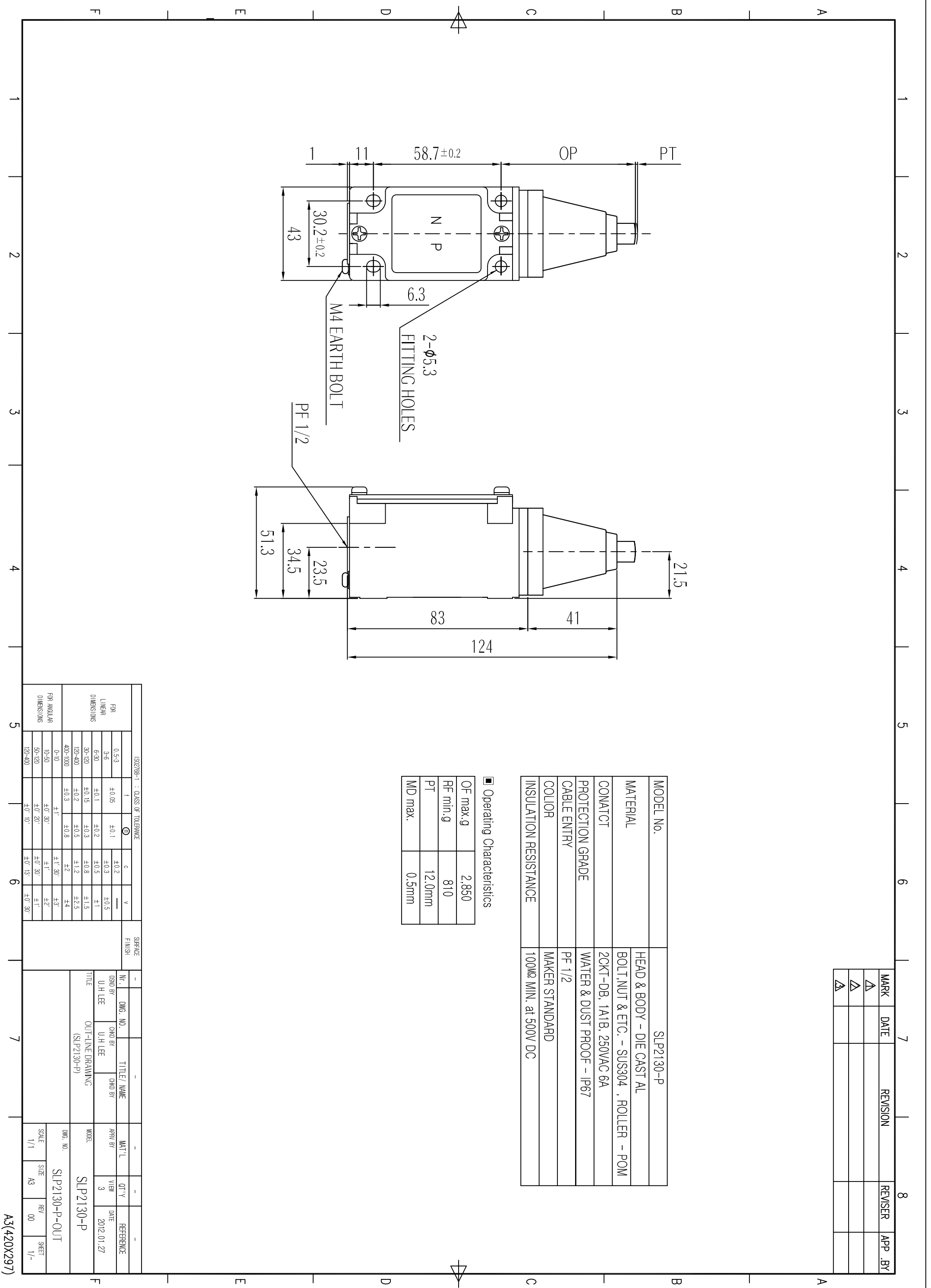
OF max. g	2.850
RF min. g	810
PT	12.0mm
MD max.	0.5mm



FOR ANGULAR DIMENSIONS	ISO2768-1 : CLASS OF TOLERANCE				SURFACE FINISH	-			
	f	M	H	V		NO.	DESIGNED BY	CHD BY	CHKD BY
0.5-3	±0.05	±0.1	±0.2	—					
3-6	±0.1	±0.2	±0.3	±0.5					
6-30	±0.15	±0.3	±0.5	±1					
30-120	±0.2	±0.5	±1.2	±2.5					
120-400	±0.3	±0.8	±2	±4					
400-1000	±1	±1.30	±3	±7					
0-10	±0.30'	±1'	±2'	±3'					
10-50	±0.20'	±0.30'	±1'	±1'					
50-120	±0.10'	±0.13'	±0.30'	±0.30'					
120-400									

NO.	DESIGNED BY	CHD BY	CHKD BY	DATE	REFERENCE
	U.H LEE	U.H LEE		2012.01.27	

NO.	MODEL	SCALE	SIZE	REV	SHEET
	SLP2130-P	1/1	A3	00	1/-



A3(420X297)