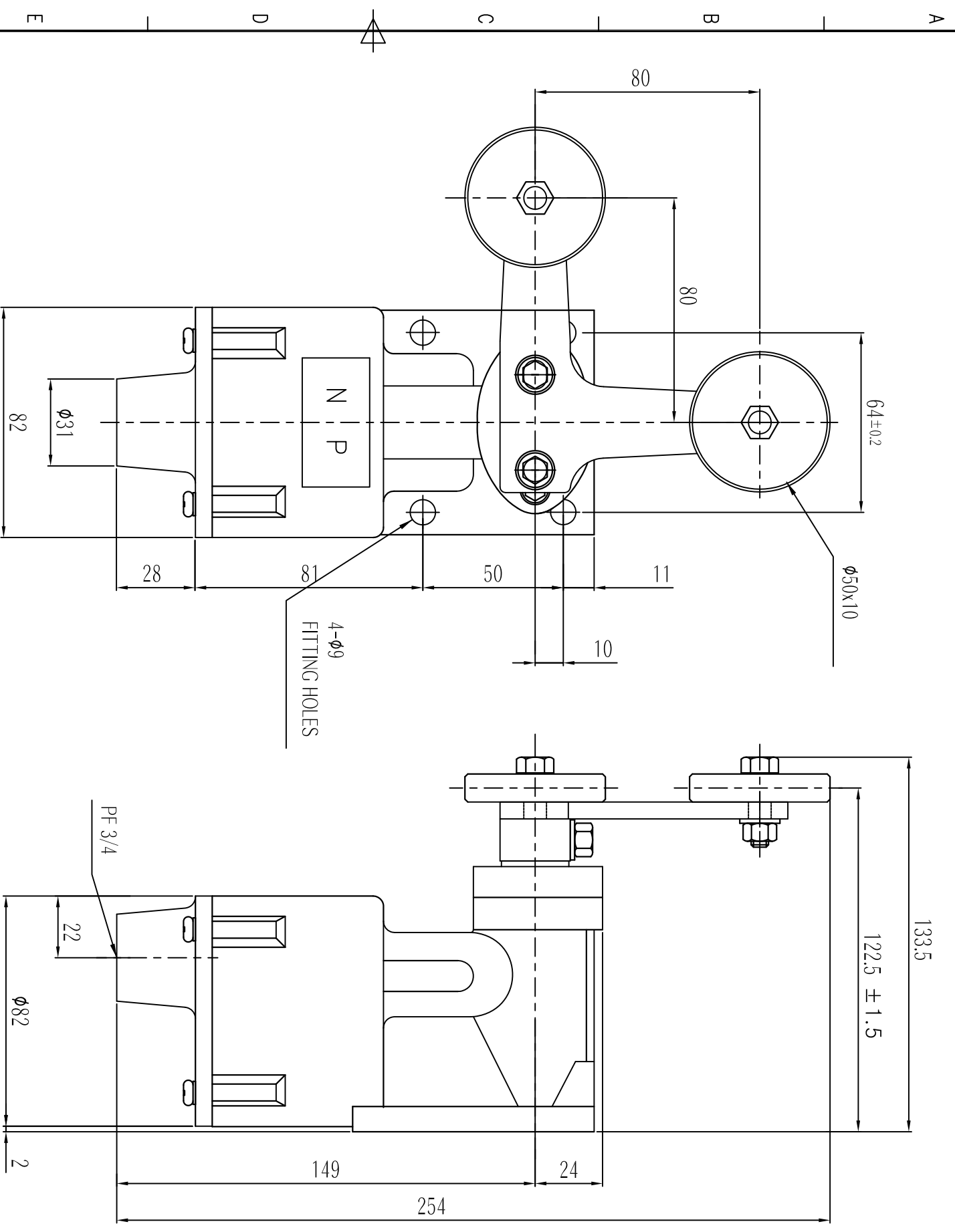


MARK	DATE	REVISION	REVISER	APP. BY
△				
△				
△				

MODEL NO.	SH8560-FL / SH8560S-FL			
MATERIAL	SH8560-FL : HEAD & BODY - DIE CAST AL SH8560S-FL : HEAD & BODY - CAST BRASS			
CONACT	2CKT-DB, 1A1B, 250VAC 6A			
PROTECTION GRADE	WATER & DUST PROOF - IP56			
CABLE ENTRY	PF 3/4			
COLOR	MAKER STANDARD			
INSULATION RESISTANCE	100MΩ MIN. at 500V DC			

■ Operating Characteristics

OF max. g	1,800
PT	75°
OT	60°



ISO2768-1 : CLASS OF TOLERANCE				SURFACE FINISH		TITLE / NAME		MAT'L		REFERENCE	
F	M	H	V	g	v	DRW BY	CHKD BY	APPR BY	VIEW	DATE	
0.5-3	±0.05	±0.1	±0.2	±0.2	±1°	U.H LEE	U.H LEE		3	2012.01.27	
3-6	±0.1	±0.2	±0.3	±0.3	±1°						
6-30	±0.15	±0.3	±0.5	±0.5	±1°						
30-120	±0.2	±0.5	±1.2	±2	±1°						
120-400	±0.3	±0.8	±2	±4	±1°						
400-1000	±0.5	±1.2	±3	±6	±1°						
0-10	±0.1	±0.2	±0.3	±0.5	±1°						
10-50	±0.2	±0.4	±0.6	±1.0	±1°						
50-120	±0.3	±0.6	±1.0	±1.5	±1°						
120-400	±0.5	±1.0	±1.5	±2.5	±1°						