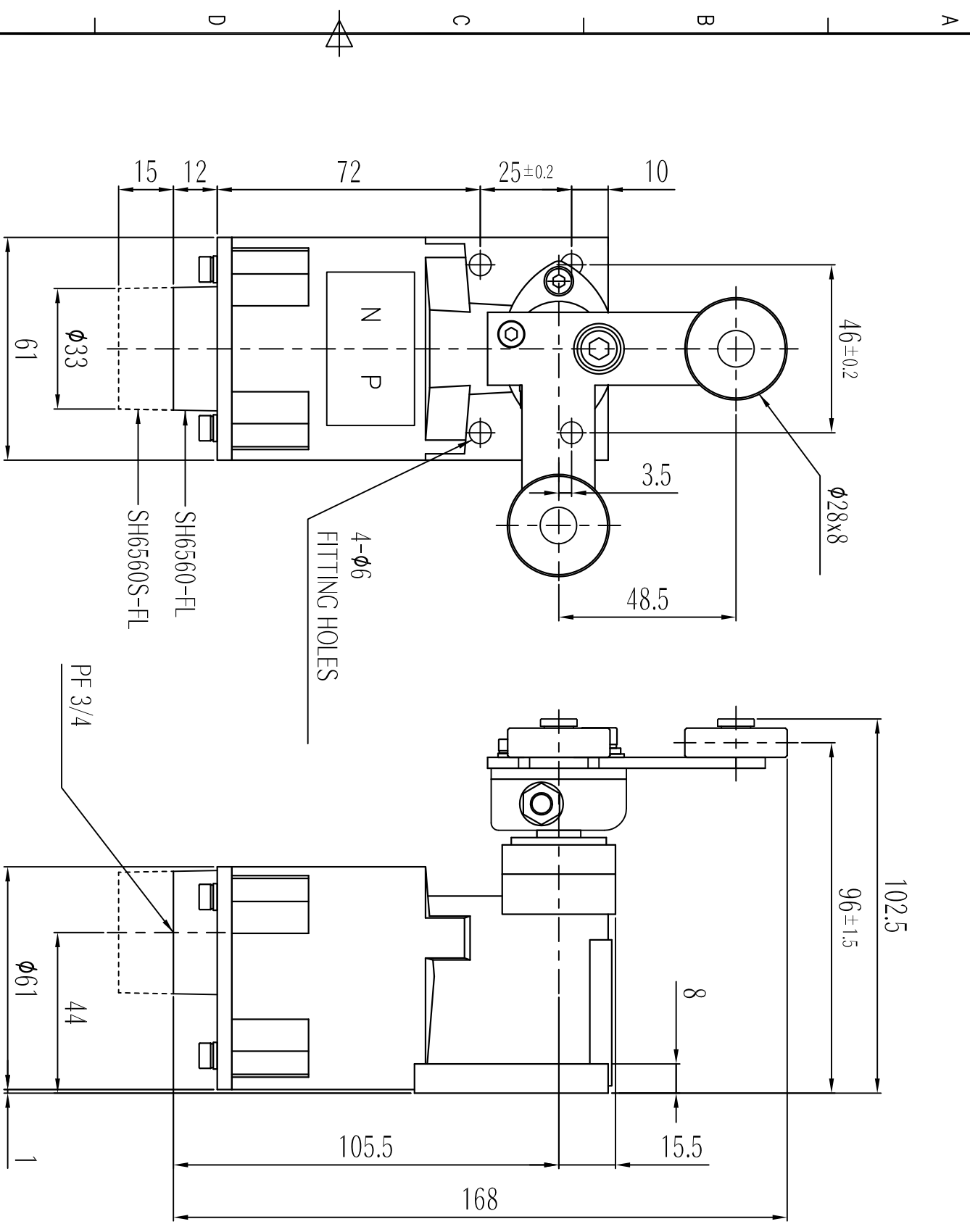


MARK	DATE	REVISION	REVISER	APP. BY
Δ				
Δ				
Δ				

MODEL No.	SH6560-FL / SH6560S-FL	
MATERIAL	SH6560-FL : HEAD & BODY - DIE CAST AL SH6560S-FL : HEAD & BODY - CAST BRASS	
CONACT	BOLT, NUT & ETC. - SUS304	
PROTECTION GRADE	20KT-DB, 1A1B, 250VAC 6A	
CABLE ENTRY	WATER & DUST PROOF - IP56	
COLOR	PF 1/2	
INSULATION RESISTANCE	MAKER STANDARD 100MΩ MIN. at 500V DC	

Operating Characteristics

Of max.g	1.420
PT	30°
OT	60°



ISO2768-1 : CLASS OF TOLERANCE		f	M	c	v
FOR LINEAR DIMENSIONS	0.5-3	±0.05	±0.1	±0.2	—
	3-6	±0.1	±0.3	±0.5	—
	6-30	±0.15	±0.5	±1	—
	30-120	±0.3	±1.2	±2.5	—
	120-400	±0.8	±3	±7	—
	400-1000	±2	±8	±20	—
FOR ANGULAR DIMENSIONS	0-10	±1'	±1' 30"	±3'	—
	10-50	±0' 30"	±1'	±2'	—
	50-120	±0' 20"	±0' 30"	±1'	—
	120-400	±0' 10"	±0' 13"	±0' 30"	—

NO.	DESIGN NO.	TITLE / NAME	MAT'L	QTY	REFERENCE
DESIGNED BY	U.H LEE	CHD BY		VIEW	DATE
U.H LEE		U.H LEE		3	2012.01.27
TITLE			MODEL		
OUT-LINE DRAWING (SH6560-FL / SH6560S-FL)			SH6560-FL / SH6560S-FL		
DESIGN NO.			SH6560S-FL-OUT		
SCALE			SIZE		
1/1			A3		
REV			REV		
00			00		
SHEET			SHEET		
1/-			1/-		

1 2 3 4 5 6 7

A B C D E F

1 2 3 4 5 6 7 8

A B C D E F

A3(420X297)