

# USB Tower lamp Manual

Q-Light Co., Ltd.

- 1. Q-Light USB Tower Lamp is IEEE 1394 Protocol Universal Serial Bus type and is applicable at the host computer which can support USB 1.1 or higher version.**
- 2. LED tower lamp of a system which can communicate with PC under USB communication protocol and is controlled by the application program on PC by connecting to USB port of PC.**

## ☐ Operating Power

1) Standard : PC USB Port Power, 5[V]/500[mA]

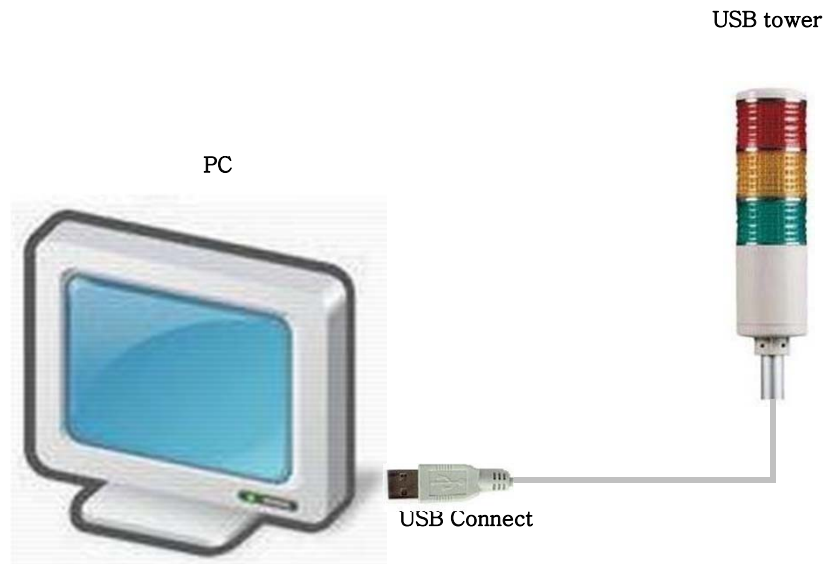
## ☐ Signal Transmission : USB Cable

Red (VCC : +5V), White (D- : Signal)

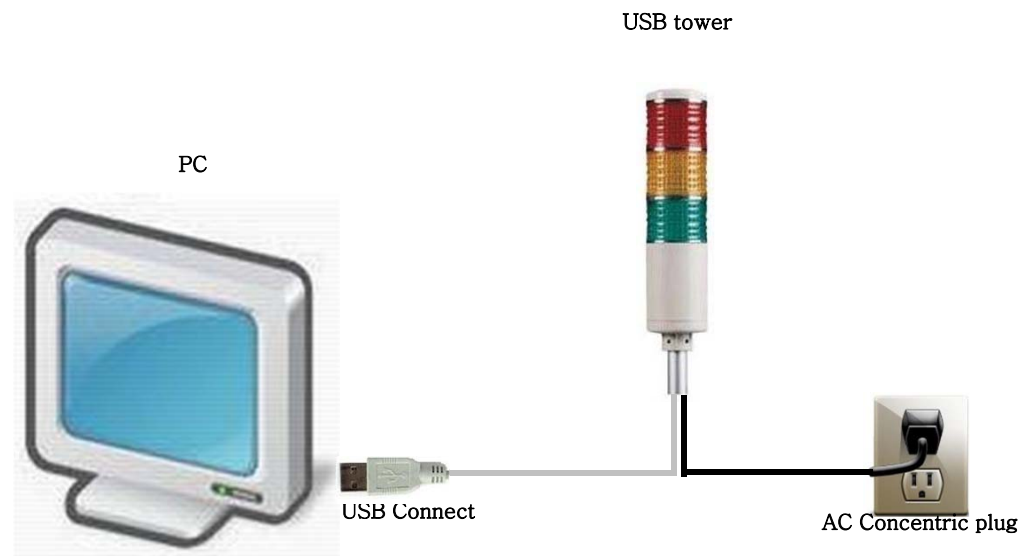
Green (D+ : Signal), Black (GND : 0V)

## 1. PC ⇔ Q-Light USB Tower Lamp

### 1) Standard Installation Connecting



## 2) Connecting by Using Separate Power Supply



## ☐ **Power Line**

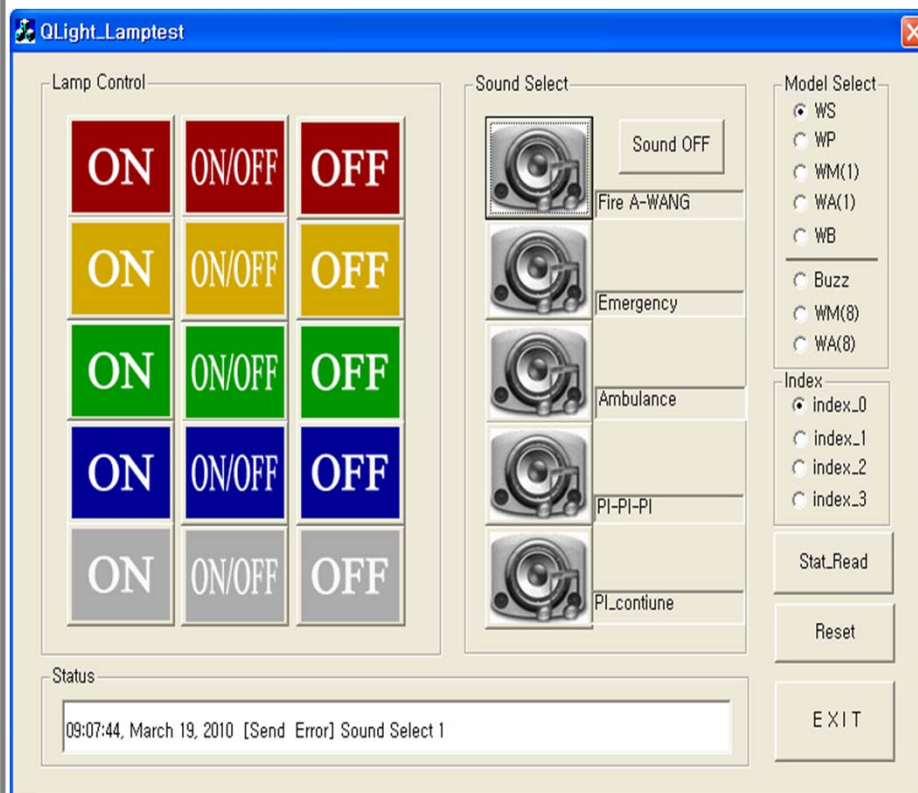
1) Standard : USB port power

(without separate power cable)

2) Separate Power : Normal AC Power Cable(0.75mm<sup>2</sup>)

## ☐ **Signal Line : USB Cable**

## 2) Test Program



- ❖ If the test program(qlight usb tower ver 1.1) is run, left screen will be displayed.
- ❖ Connect USB tower lamp to PC USB port and click “Stat\_Read” button to confirm the connection status of of tower lamp.
- ❖ If click one of color buttons, same color of corresponding lamp will be turn on. [1:ON, 2:ON/OFF, 3:OFF]
- ❖ If click one of speaker buttons on “Sound Select”, corresponding sound signal will be output from tower lamp.
- ❖ Click “Sound OFF” button to stop sound.
- ❖ Model Select : one of 8 sound tones can be selected(WS,WP,WM1,WA1,WB,Buzz, WM8 and WA8).
- ❖ Index: product index no. in case of using plural numbers of tower lamp with 1 PC.

# File & Software for Installation

Q-Light Co., Ltd.

8

- ☐ TEST PROGRAM
- ☐ HID(USB) driver library manual & DLL file
- ☐ OCX File



☐ Head Office : Tel. 055) 328-4082

**Q-LIGHT CO., LTD.**

<http://www.qlightkr.com>

☐ Seoul Office : Tel. 02) 2679-6152

☐ A/S & Technical Support :

**Tel. 055) 328-4061~63, / 328-4082**

☐ E-Mail : [mbc@qlightkr.com](mailto:mbc@qlightkr.com)